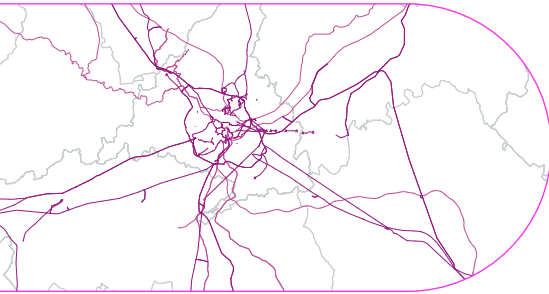


reintel

A Redeia company

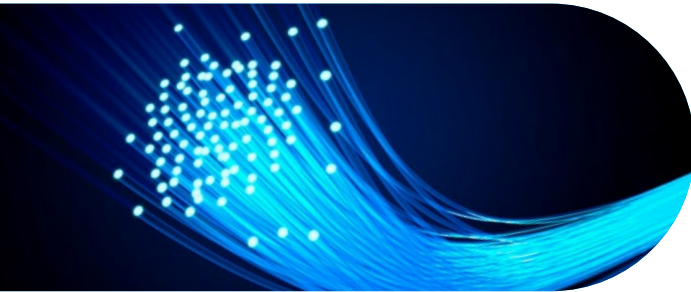




Dark fibre optic
backbone network



Sites for housing
equipment



Dedicated cable and
customised solutions

redeia

Global operator of essential infrastructures.

A driver of the energy transition and universal connectivity.

It operates the Spanish electricity system and manages electricity and telecommunications networks (fibre optics), with a focus on innovation and sustainability.

red eléctrica

Backbone of the energy transition, ensuring a secure, high-quality, and increasingly renewable electricity supply.

reintel

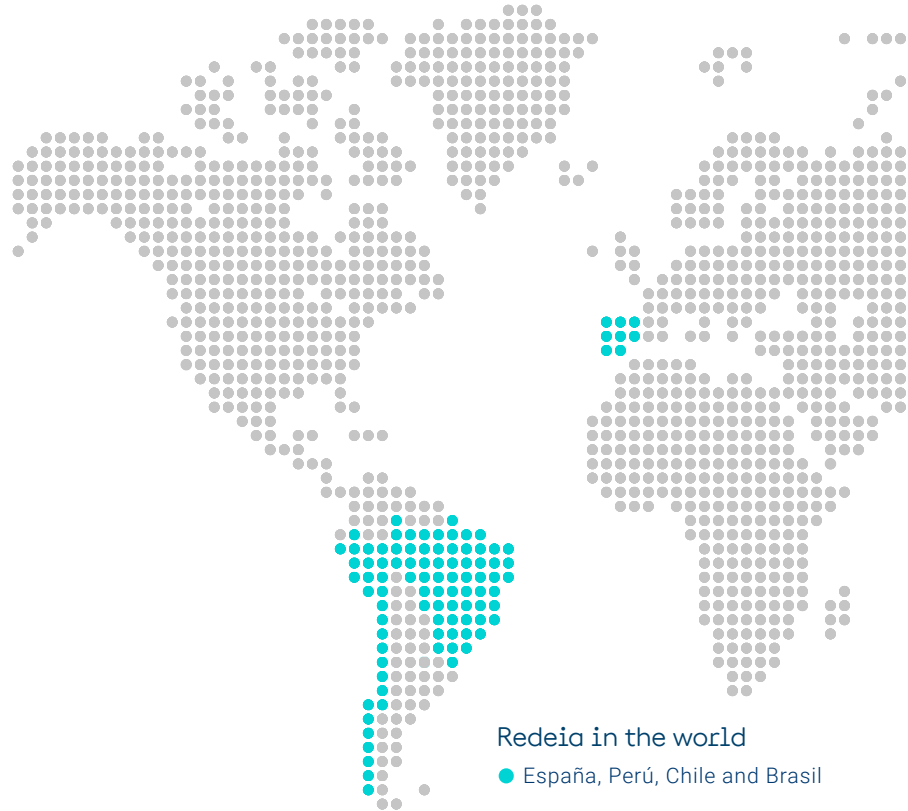
Spain's leading dark fibre provider, essential for universal connectivity.

redinter

The driving force behind the decarbonisation of the energy model and sustainable development in Latin America.

elewit

A technology innovation platform driving the energy transition and connectivity.



Reintel is a subsidiary owned 51% by Redeia and 49% by the KKR investment fund*.

We are the largest neutral operator of dark fibre optic infrastructure in Spain, and an essential company for achieving universal connectivity.

Our core business is the rental and maintenance of an extensive dark fibre optic network deployed over the electricity transmission grid and the railway network, as well as sites and technical spaces for housing electronic equipment that we provide to the main telecommunications operators in Spain.



Milestones

- 1989 ● Start of **deployment** of the company's **fibre optic network**.
- 1997 ● Start of **marketing of the surplus fibre optic network** (liberalisation of the sector in Spain).
- 2014 ● Award of **the rights of use and operation of the Adif-Alta Velocidad fibre optic network** for a 20-year period.
- 2015 ● **Creation of Reintel**, the Group's subsidiary for the operation of dark fibre optic.
- 2022 ● **Redeia's sale of the 49 % minority** stake in the share capital of Reintel to the investment fund KKR.
- 2024 ● Evolution of **sustainability at Reintel**: certification under ISO 14001 (Environmental Management) and ISO 9001 (Quality Management), and the Decarbonisation Plan.
- 2025 ● **Consolidation as a supplier** to the **leading telecommunications operators**, ensuring the long-term sustainability of the business.

* Kohlberg Kravis Roberts & Co.

We operate the largest dark fibre optic network

- We manage a wide, meshed and redundant fibre optic backbone network with connections to island and international access systems, with interconnection points with France, Portugal, Morocco and Andorra.
- We have sites and technical spaces located throughout Spain for housing electronic equipment used for signal regeneration, insertion and extraction.
- We provide capillarity and access to customers' trunk or metropolitan transmission grids by constructing specific dark fibre optic sections.
- We provide maintenance services for Red Eléctrica's fibre optic network and telecommunications equipment.

We have the most appropriate infrastructures and tools to achieve widespread connectivity.



We prioritise excellence and continuous investment

We ensure excellence in infrastructure operations and maintenance processes.

- We have a permanent 24-hour, year-round service and monitoring centre.
- We have a plan for the development, renewal and improvement of infrastructures, equipment and sites.
- We design tailored solutions, accompanying our clients in their growth and development.

We make our infrastructures available to the main telecommunications operators present in Spain

- International operators.
- National operators.
- Regional and local operators.
- Utility companies.
- Network and system integrators.
- Cloud and hyperscale companies.
- Public Administrations.



Sustainable management



Customer Orientation

We provide the best solution in a flexible and creative environment.



Neutrality

We guarantee transparent and neutral access to our fibre optic network.



Excellence

We prioritise excellence, ensuring high levels of service quality and availability.



Experience

We are backed by over 30 years' experience in the operation of critical infrastructures (electricity system and railway network).



Reintel has implemented environmental and quality management systems certified by AENOR in accordance with ISO 14001 and ISO 9001 standards.



Reintel in figures (2025)



149.5 M€ in revenues



54,777 km of fibre optic network
45 interconnections



1.457 sites
923 electrical
534 railway



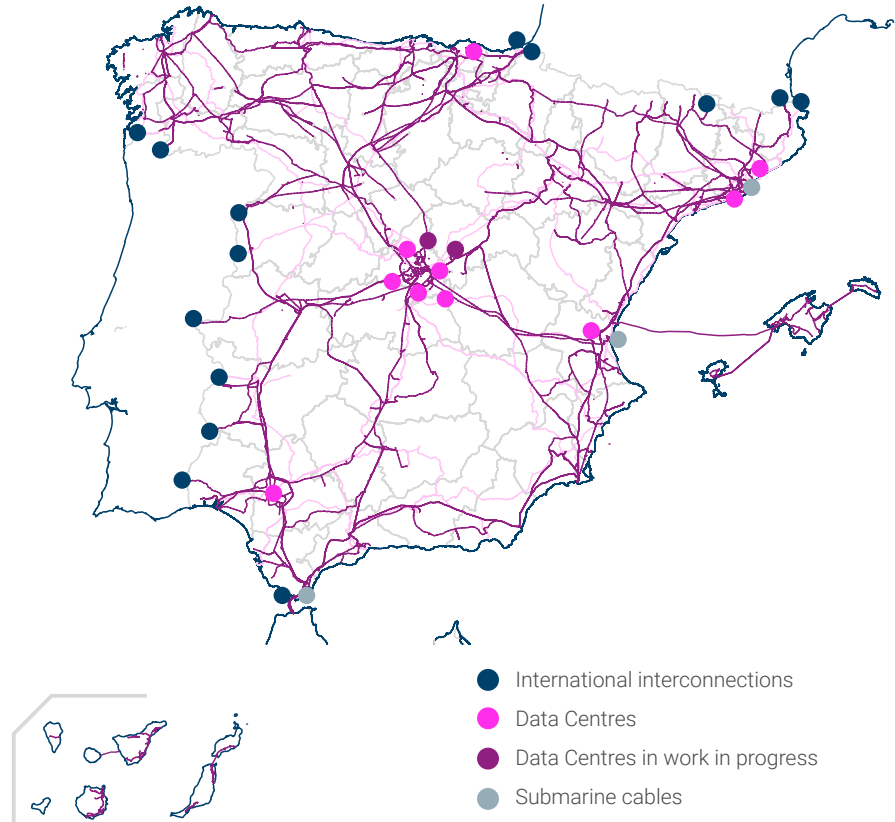
50 provinces covered

Our backbone network

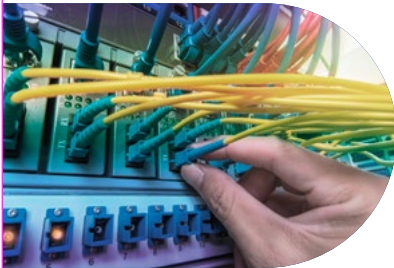
Backbone network formed by integrating the surplus fibre optic network of the electricity transmission grid, which belongs to Red Eléctrica, and the fibre network not dedicated to Adif-High Speed long-distance rail service.

- Secure and robust backbone network.
- Meshed and interconnected.
- National coverage.
- Island connection and international access.
- Cable redundancy: underground (railway environment) and aerial/ submarine/ underground (electrical environment).

The largest dark fibre optic network in Spain enables Portugal, France, and Africa to be connected to the main data processing centres in the country with the maximum level of redundancy and reliability available in the market.



Our sites



Sites for housing equipment

We have multiple strategically distributed locations to provide the best response to our customers' technical requirements.



Electrical environment

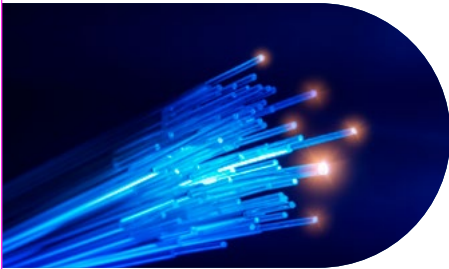
Telecommunications cabins located next to electricity substations distributed throughout the high-voltage transmission grid.



Railway environment

Telecommunications stations strategically distributed along the railway backbone and metropolitan areas.

Dedicated cable and custom solutions



Dedicated cable networks in major cities: metropolitan rings

We offer a dedicated cable solution to provide extensive coverage and access to our customers' backbone or metropolitan transport networks.

Using dedicated cable, we can build specific sections of dark fibre in railway infrastructure, whether on the long-distance or commuter network. In turn, these sections connect the interconnection points of one or more customers, to complete access to their backbone networks.



Tailor-made solutions for our customers

We design comprehensive dark fibre projects tailored to our customers' needs:

- Multi-site projects.
- Connectivity with neutral points.
- Network integration.
- Redundant rings.
- Projects for local operators and public authorities.
- Peninsular transit of pan-European and transoceanic networks.
- On-demand infrastructure deployment projects.

An essential company
to achieve universal
connectivity

We are the largest neutral
dark fibre infrastructure
operator in Spain

redeia

Valuing the essentials

red eléctrica reintel redinter elewit

www.redeia.com/en

www.reintel.es/en